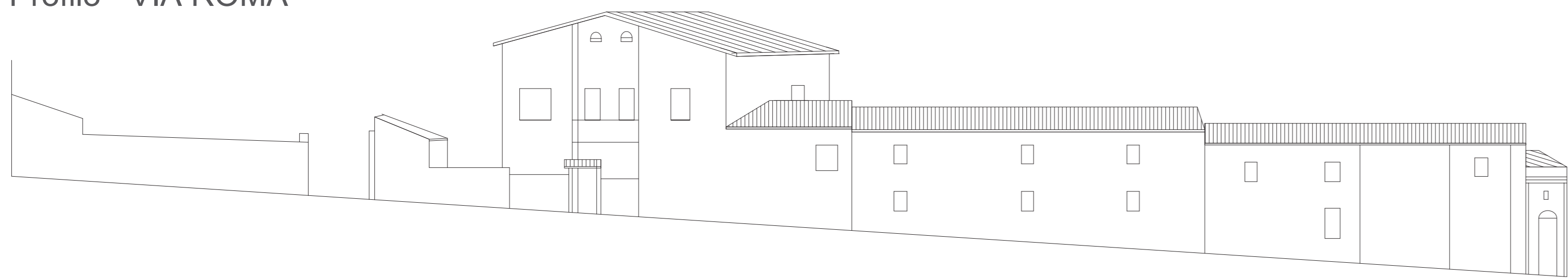
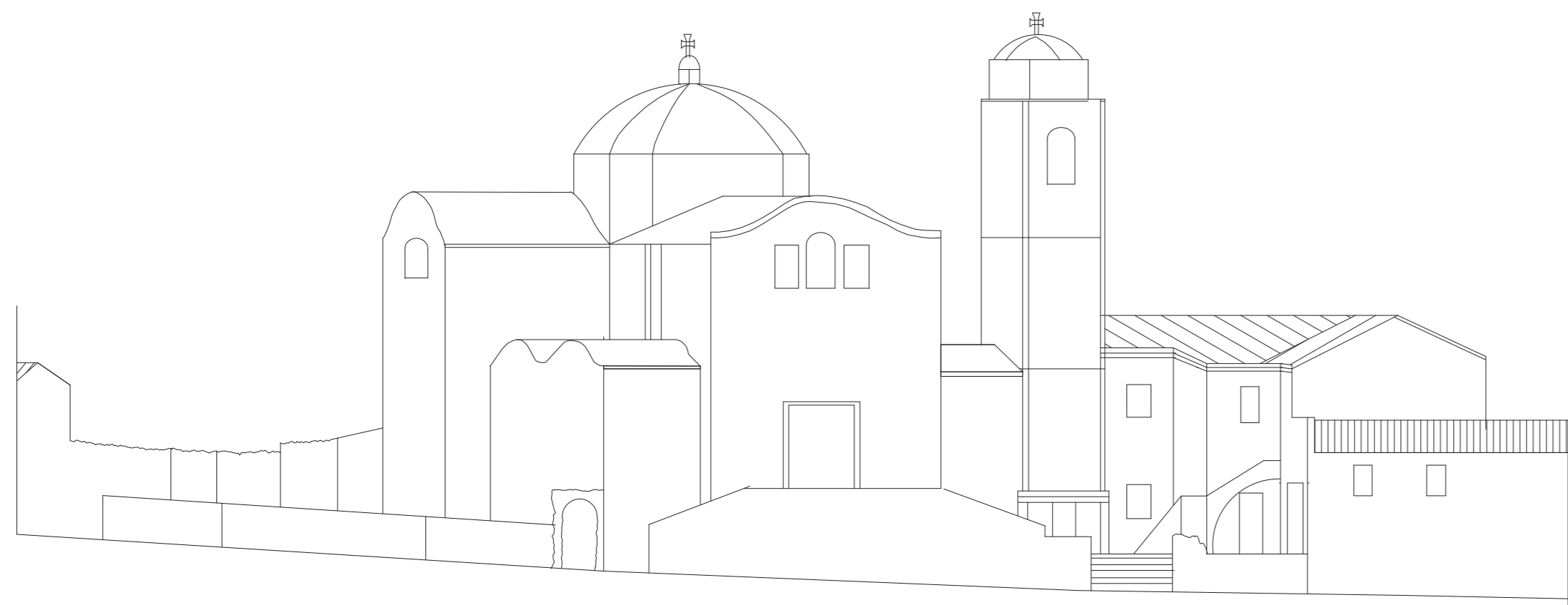


ISOLATO 1

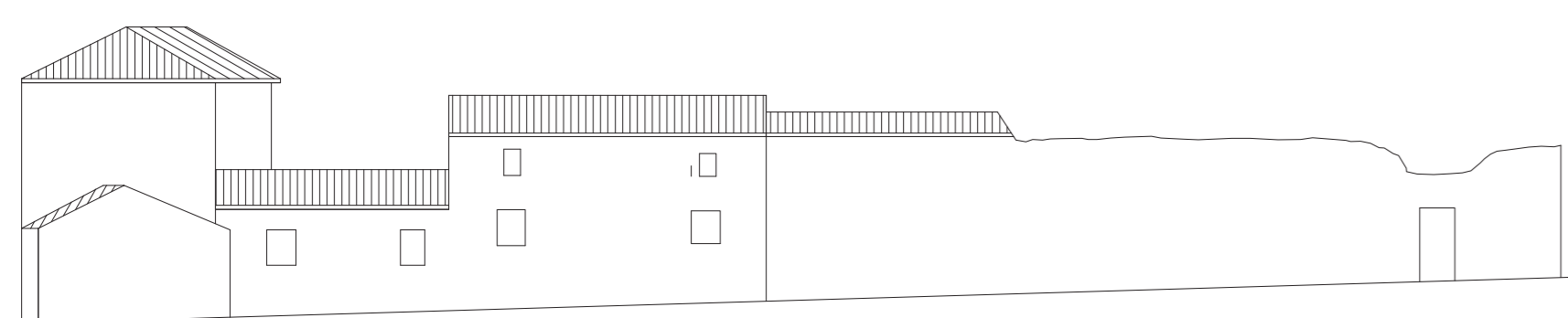
Profilo - VIA ROMA



Profilo - VIA ROMA

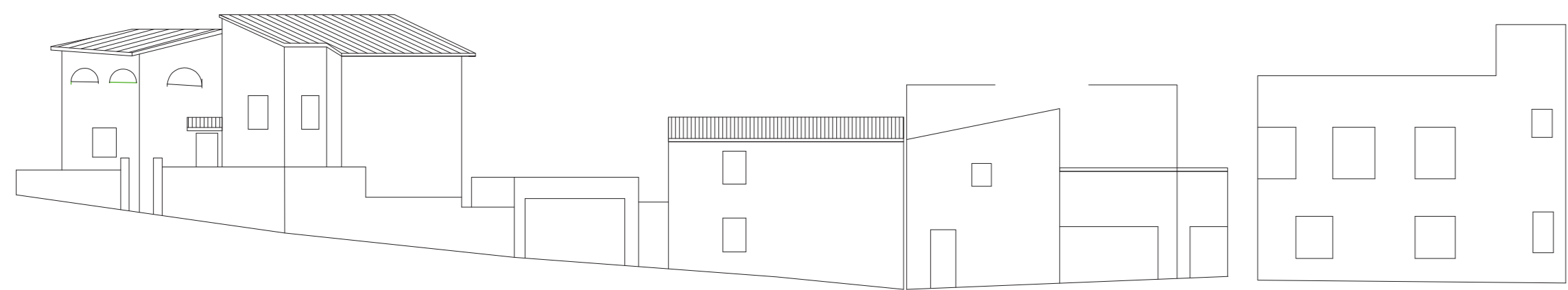


Profilo - VIA SANTA VITALIA

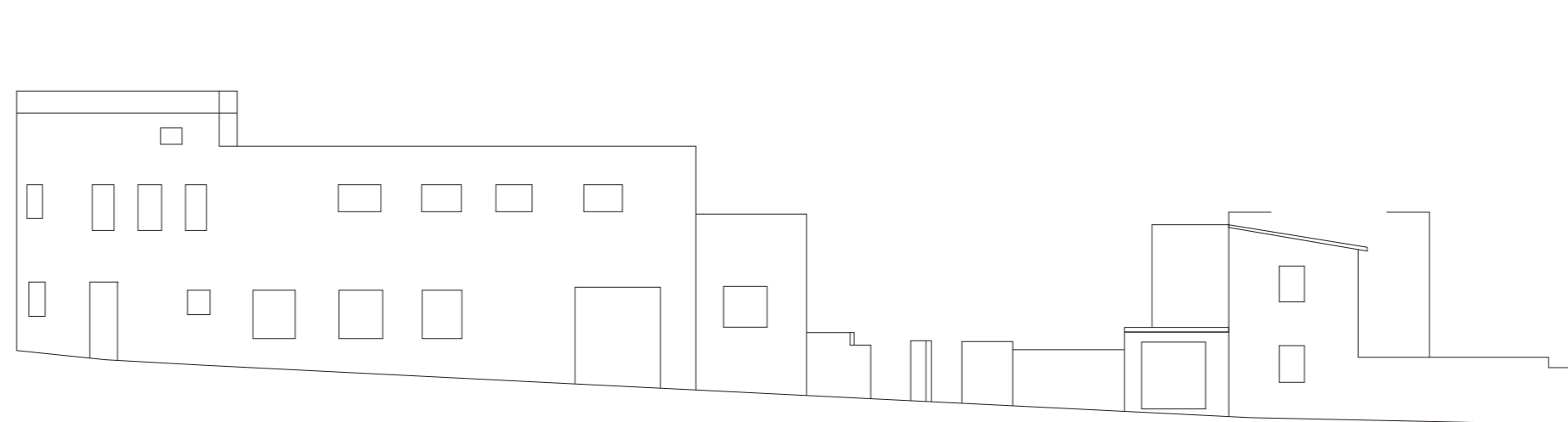


ISOLATO 2

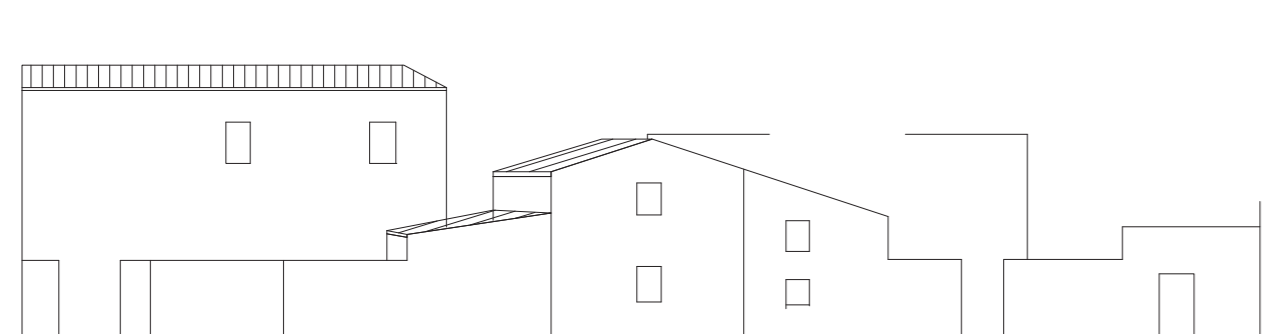
Profilo - VIA TRIESTE



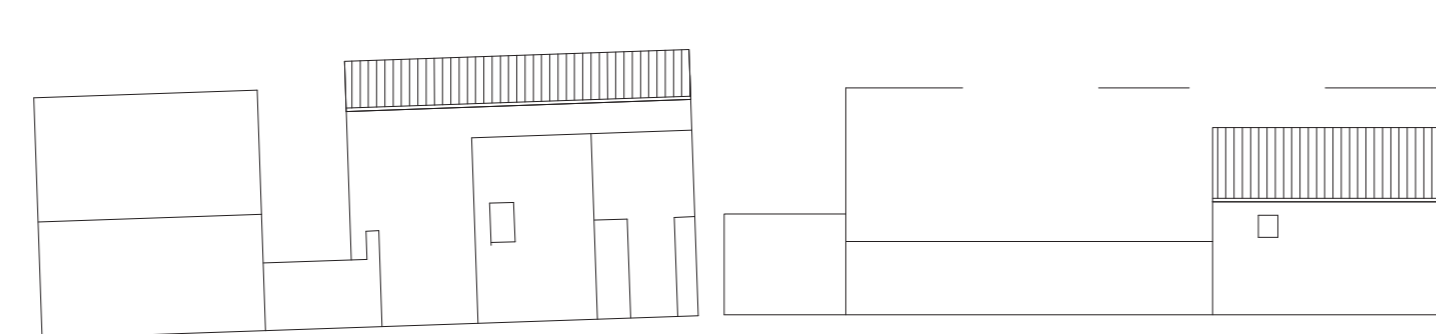
Profilo - VIA TRIESTE



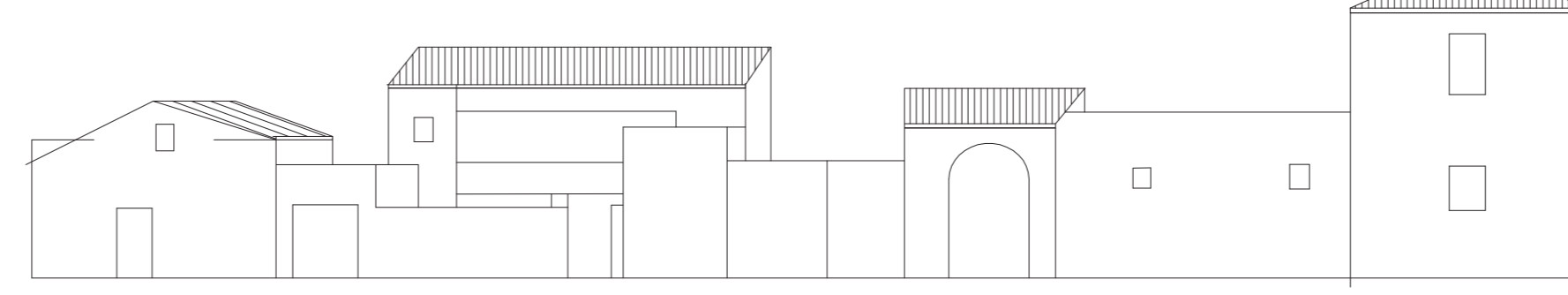
Profilo - VIA TRIESTE



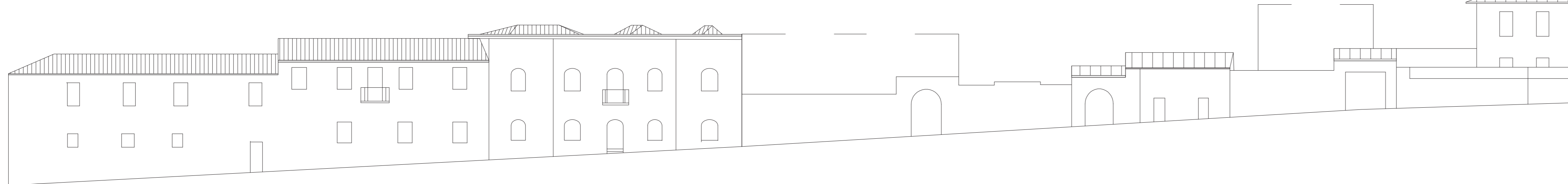
Profilo BB - VICO I TRIESTE



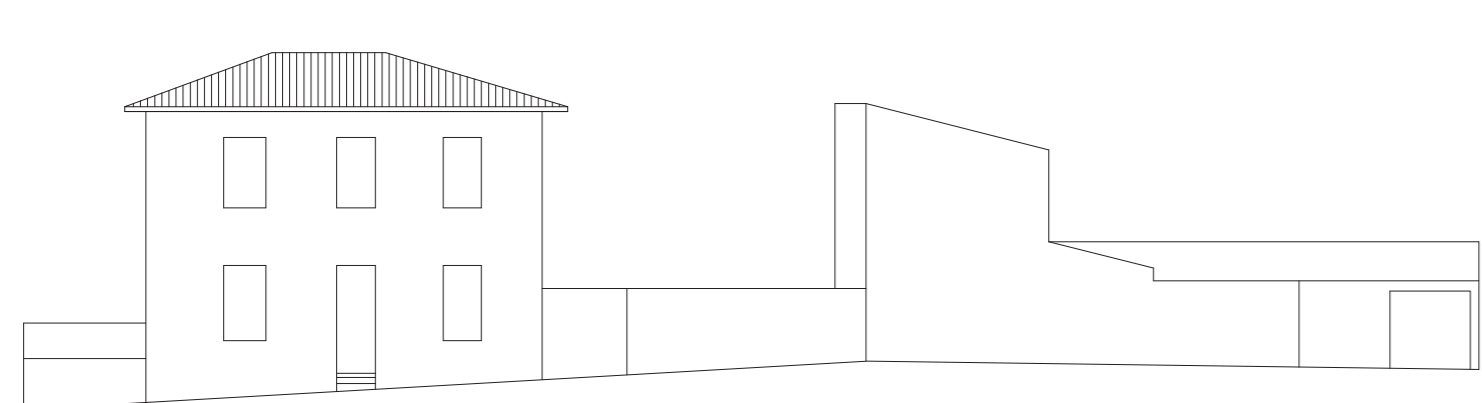
Profilo - VIA TRIESTE



Profilo - VIA ROMA

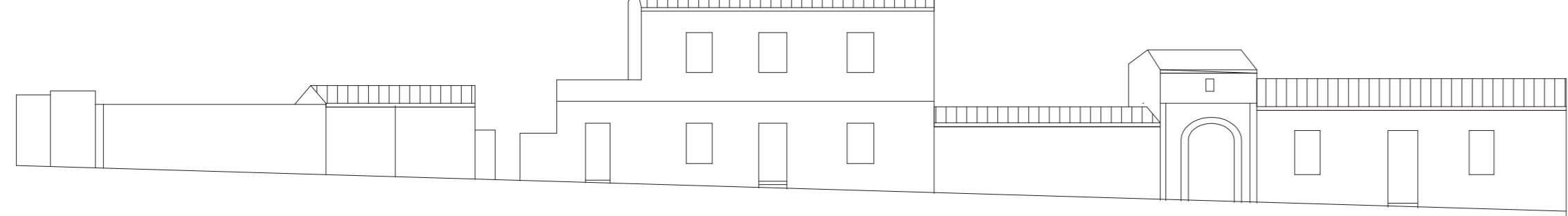


Profilo - VIA ROMA

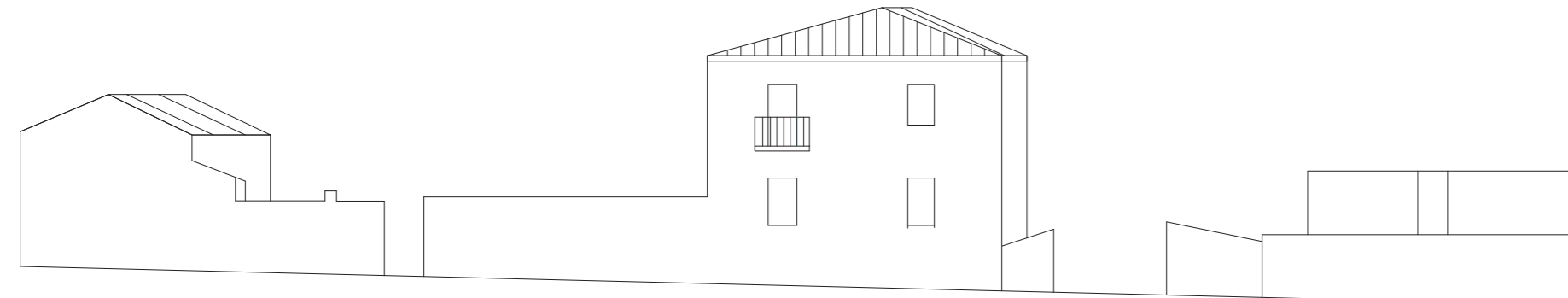


ISOLATO 3

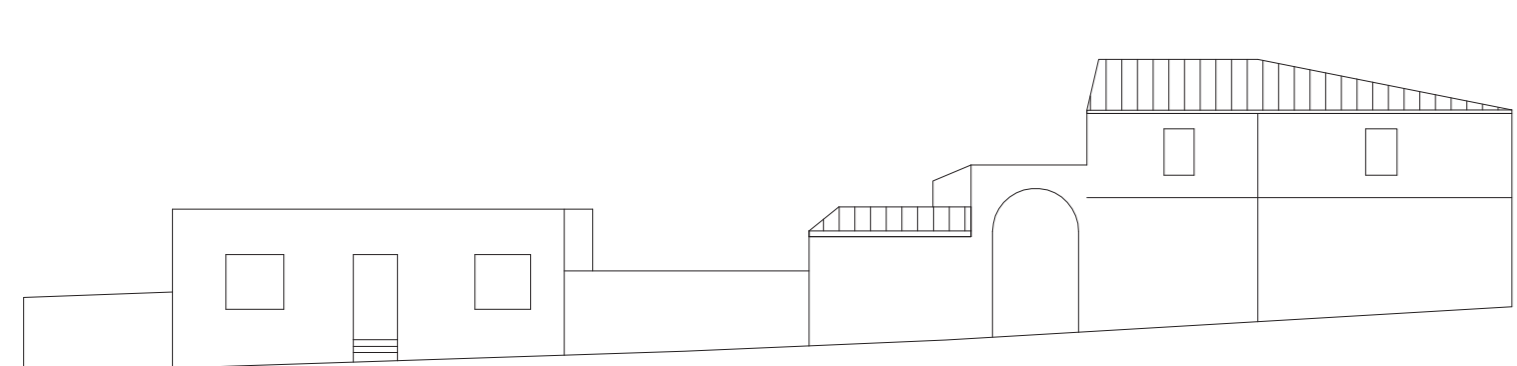
Profilo - VIA TRENTO



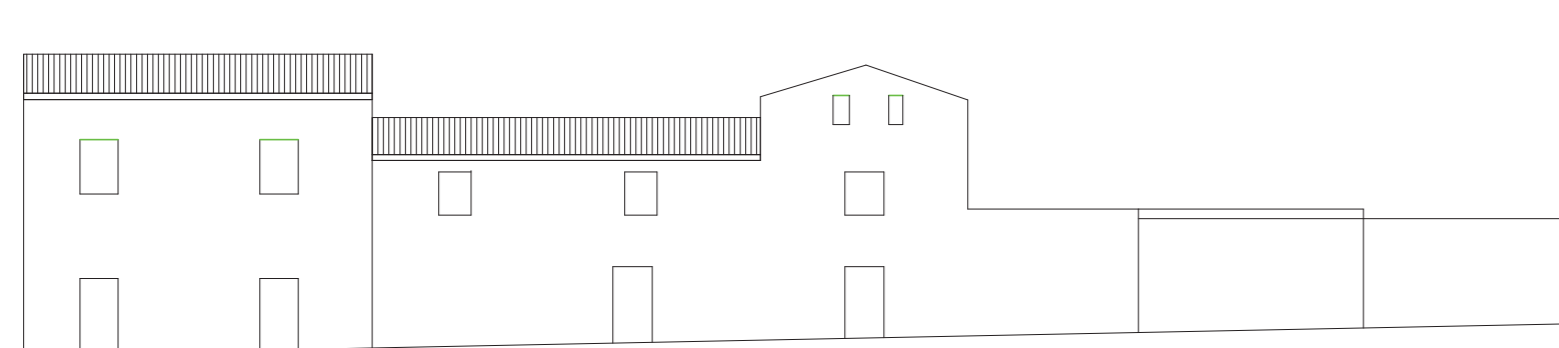
Profilo - VIA TRENTO



Profilo - VIA ROMA



Profilo - VIA TRIESTE



Comune di Simala
Provincia di Oristano



**Piano Particolareggiato
del Centro di antica e prima formazione**

tavola 07.b1
Piano particolareggiato previgente
Profili degli isolati 1 - 2 - 3
(Del. C.A. n. 1 del 22/05/2001)

scala 1:200

Maggio 2016

Sindaco

Giorgio Scano

Assessore all'Urbanistica

Marcello Sitzia

Responsabile Ufficio Tecnico

Geom. Andrea Mocci

Digitalizzazione ed aggiornamento a cura di

CRITERIA

Direttore Tecnico

Laura Zanini architetto

**Coordinamento generale
e progettazione tecnico-scientifica**

Paolo Falqui architetto

Roberto Ledda ingegnere

Daniela Tedde ingegnere

Laura Zanini architetto

Coordinamento operativo

Daniela Tedde ingegnere

**Contributi specialistici
elaborati da analisti**

Gianfranco Serra ingegnere

abaco elementi architettonici

Sabrina Piras ingegnere

abaco edifici in terra cruda

Carlo Corru architetto

Salvatorica Dessico architetto

aspetti cartografici

Roberto Ledda ingegnere

Cinzia Marcella Orù tecnico GIS